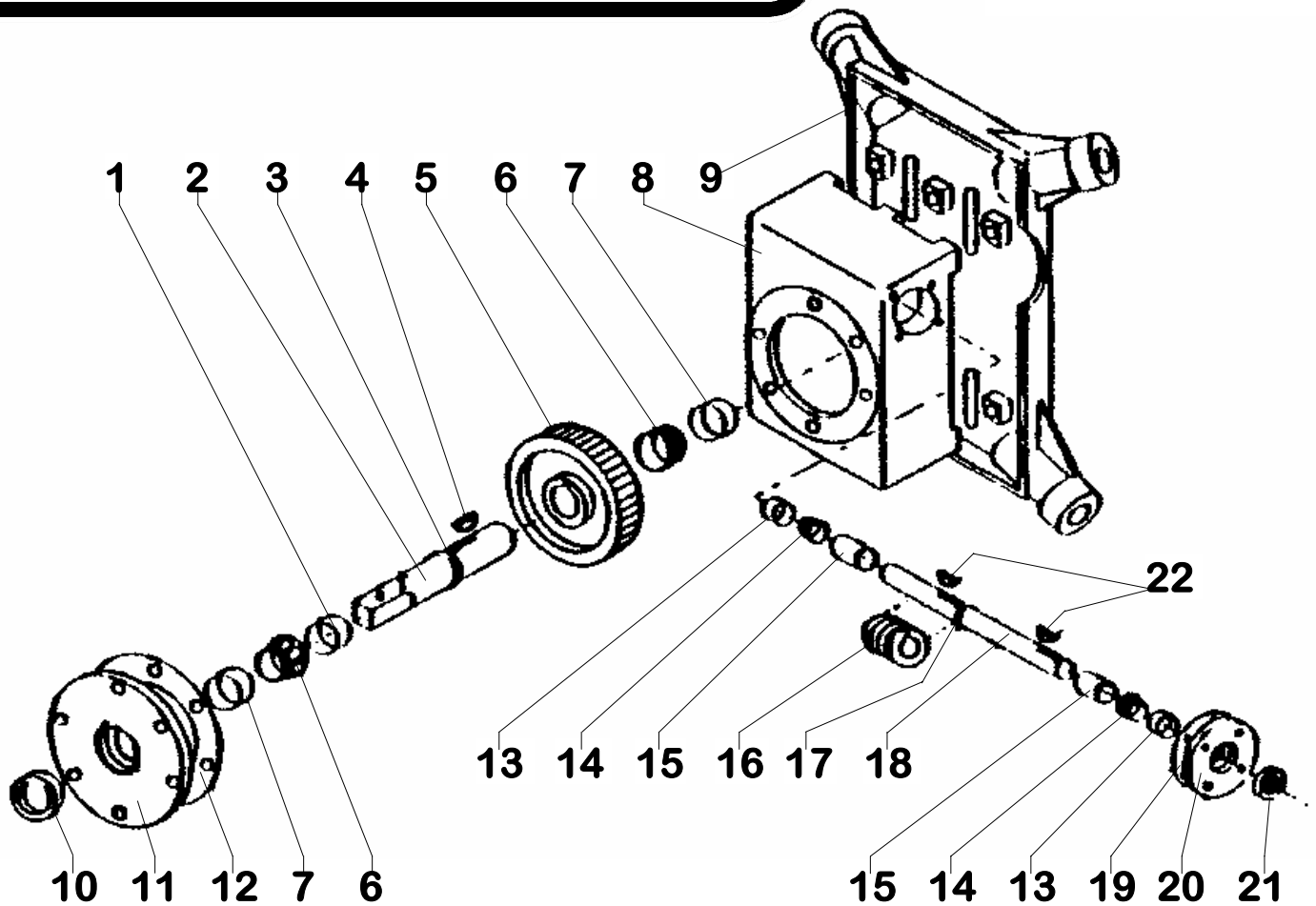




GEAR BOX BREAK DOWN



PLEASE SPECIFY IF YOU ORDERING PARTS FOR A ONE-MAN OR A TWO-MAN EARTHDRILL

1.	O.P.S.	Output shaft spacer	12.	GHU-2GS	Output gasket set
2.	GHU-5	Output shaft	13.	LM11910	Input cup
3.	RS-125	Output spiral ring	14.	LM11949	Input bearing
4.	NO. 21	1/4 woodruff key	15.	I.P.S.	Input spacer
5.	G71-3X	Bronze gear	16.	H1618	Worm gear
6.	08125	Output bearing	17.	RS-715	Input spiral ring
7.	08231	Output cup	18.	GHU-6	Input shaft
8.	GHU-1	Gear case			Specify machine
		Specify machine	19.	GHU-3GS	Input gasket set
9.	GHU-4	Engine base	20.	GHU-3	Input cap
10.	12341	Output seal	21.	7485	Input seal
11.	GHU-2	Output cap	22.	3/16 Key	Specify square or Woodruff

GHU 10:1 = Complete C-71-5 & D5 gear box

GHU-1M = Complete 1M & 1M5C gear box

1470 S. VICTORIA CT • San Bernardino, CA. 92408 • P.O. BOX 290 • San Bernardino, CA. 92402

Phone (909) 478-5700 • Toll Free (800) 922-4680

Fax (909)478-5710 • E-mail: sales@groundhoginc.com



C-71-5, D-5 & SWITCH PARTS

GW12-30	Centrifugal clutch (C-71-5)	BG	Belt guard
AX26	Two-man drive belt	272	Belt guard bracket
AK59	Pulley	SS2A	Remote stop switch assembly
600	Handle bar	SS3	ignition pig tail
TA-1	Spring return throttle (C-71-5)	SS4	Loom clamp
	Kits available. specify engine	SS5	Switch cover
TA	Throttle assembly (D-5)	SS6	Ignition switch with mount
600T	Throttle handle bar (D-5)	SS8	Ignition wire
610	Handle bar grip	SS2	Toggle switch
BGA	Complete belt guard assembly		

GEAR BOX CARE

The GHU gear box, used on the Ground Hog earth drills is a right angle, worm drive transmission. It features tapered roller bearings at all bearing points, ground and polished, high strength input and output shafts, and a hardened worm gear against a bronze drive gear.

Due to its simplicity and high quality components, this type of transmission has proven itself to be extremely reliable and durable on our earth drills for over 40 years. It is not unusual for this transmission to be in service for 20 years without major repairs.

If internal repairs are needed, pay close attention to the number of gaskets that are used on the covers. These are "shim" type gaskets that are color coded to identify thickness. When replacing internal parts, always start with the same number and thickness of gaskets, adding or removing gaskets until the shaft turns freely with no noticeable endplay. Use a soft type of gasket sealer on the inside flange of the cover during final assembly. Use 1 quart approx of a #140 gear lube.